

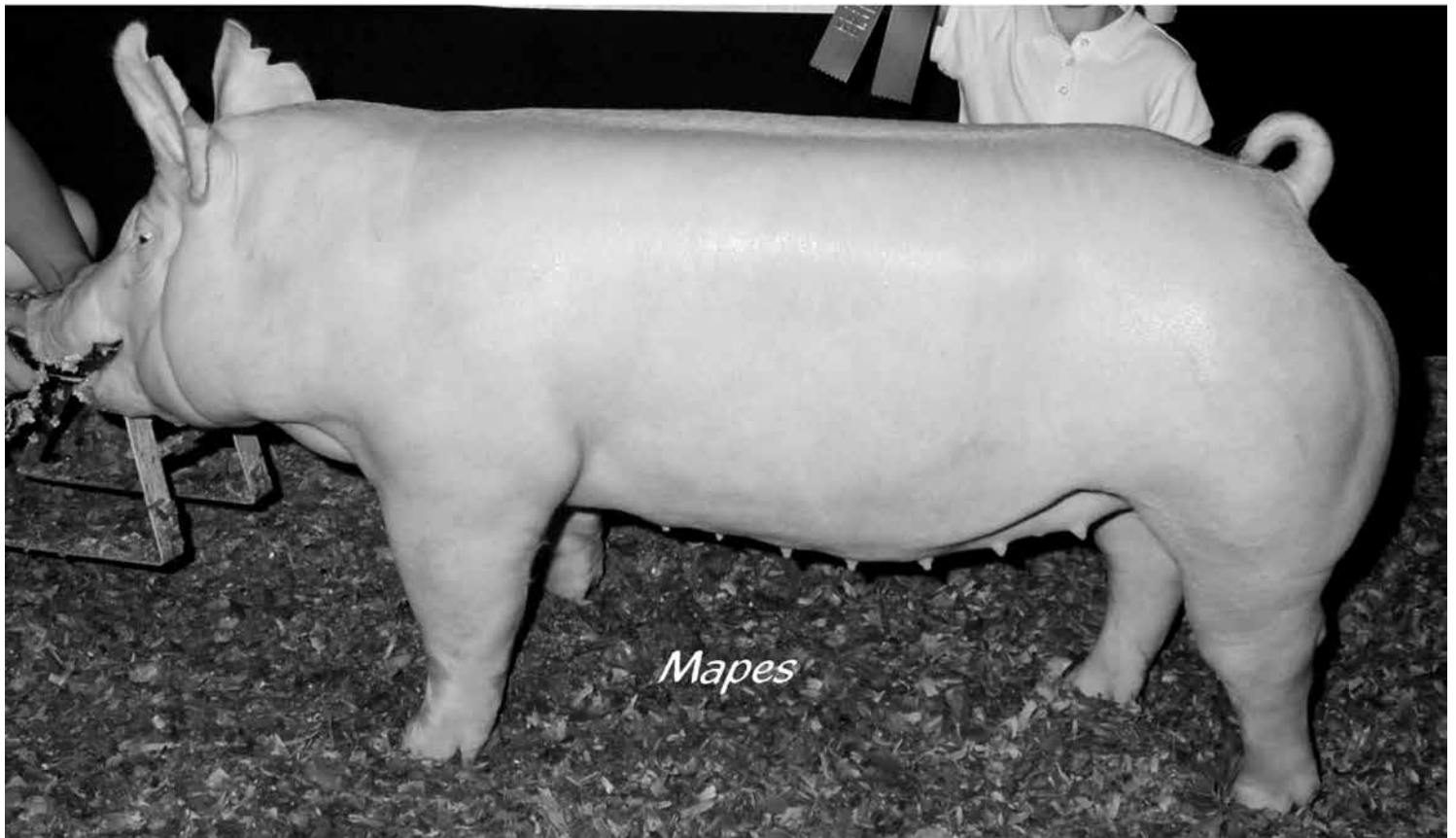
SKILLATHON



ACTIVITY

JUNIOR Swine Evaluation

GILT #1



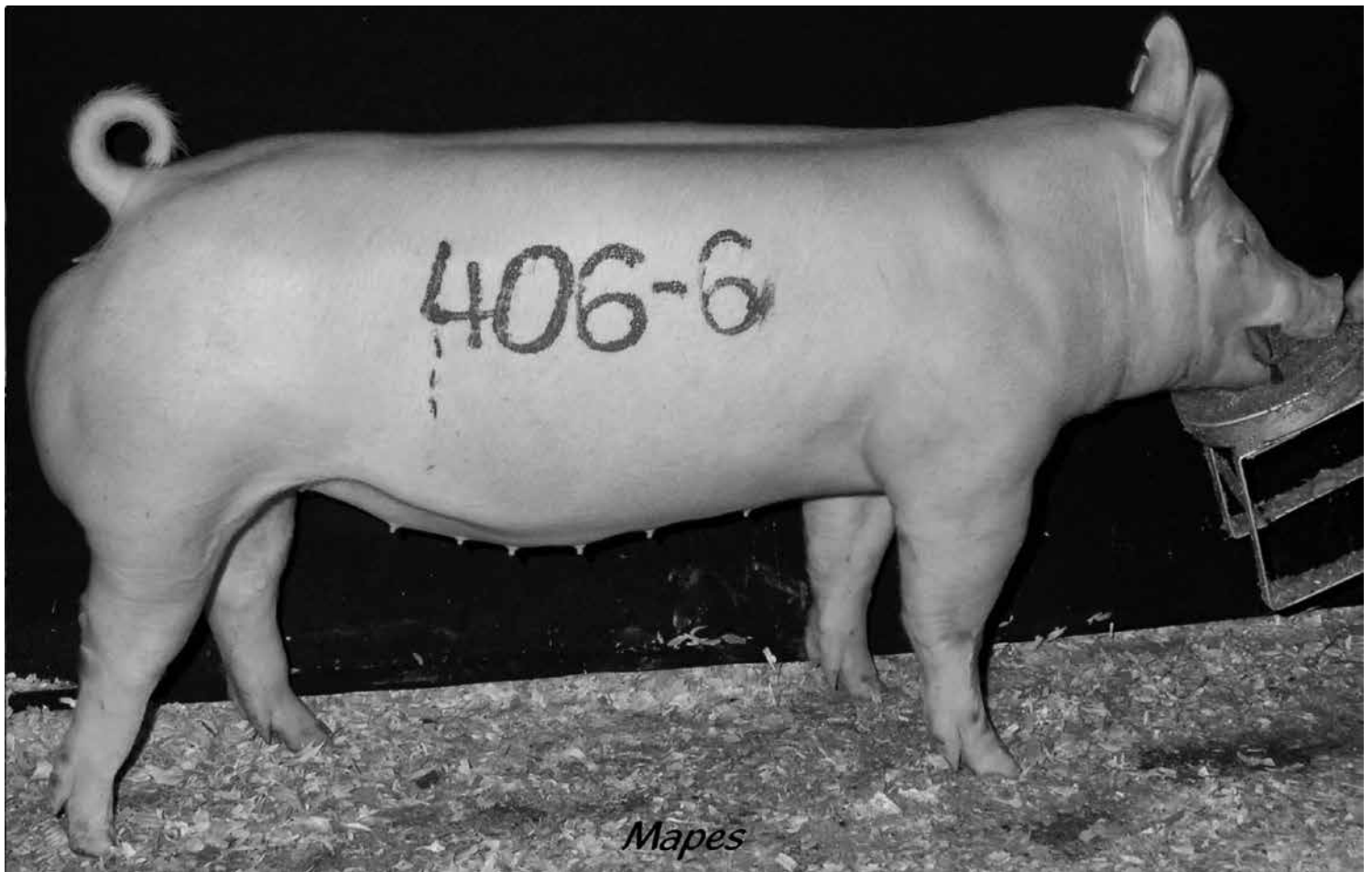
SKILLATHON



ACTIVITY

JUNIOR Swine Evaluation

GILT #2



Mapes



SKILLATHON



ACTIVITY

JUNIOR Swine Evaluation

QUESTIONS

1. Which gilt has more depth of body?
2. Which gilt is cleaner fronted?
3. Which gilt has a more refined underline or smaller teats?
4. Which gilt has a larger foot and more bone?
5. Point to the spot on gilt #2 where you would look to see if she is level hiped.
6. True or False? Both gilts have at least 6 teats showing on their underline.
7. True or False? One of these gilts is a Landrace.
8. Which gilt looks like she has more muscle?



SKILLATHON



KEY

JUNIOR

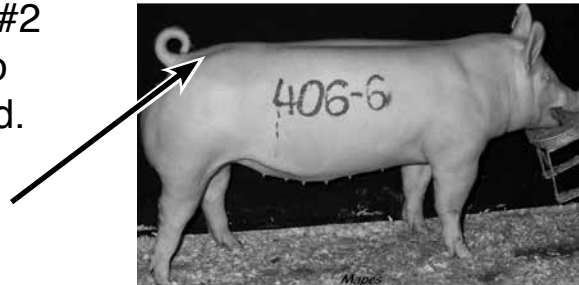
Swine

Evaluation

QUESTIONS

1. Which gilt has more depth of body? **#1**
2. Which gilt is cleaner fronted? **#2**
3. Which gilt has a more refined underline or smaller teats? **#2**
4. Which gilt has a larger foot and more bone? **#1**

5. Point to the spot on gilt #2 where you would look to see if she is level hipped.



6. **True** or False? Both gilts have at least 6 teats showing on their underline.
7. True or **False**? One of these gilts is a Landrace.
8. Which gilt looks like she has more muscle? **#1**



INSTRUCTIONS

SKILLATHON



JUNIOR Swine Evaluation

Junior Swine Evaluation Instructions

- There are two different photos of gilts laid on the table along with a questions sheet.
- Please read the questions to the participant and ask them to point to the gilt or the True/False that is the correct answer. If the participant would prefer to read the questions to him or herself that is fine too. If they choose to answer the questions out loud please ask them to speak quietly so the next participant cannot hear the answers.
- Please do not give the answer away to the participant. They may ask you questions about what a term means and you are allowed to help but only in a way that does not give the answer away.

Scoring: Each question is worth 3 points each for a total of 24 points. Every participant will receive 1 free point making this station a grand total of 25 points.

****This station has a total of 25 points.****

****Please remember to add the free point.****

Thank you very much for volunteering to help with the skillathon. Please remember to complete the skillathon facilitator information sheet and leave it on your stations table at the end of the competition. Thank You!!



SKILLATHON



STATION # _____

JUNIOR

Swine

Evaluation

