

SKILLATHON



ACTIVITY

SENIOR

Skeletal Anatomy

Coccygeal

Fibula

Sacral

Tibia

Lumbar

Phalanges

Thoracic

Scapula

Femur

Humerus

Radius

Ulna



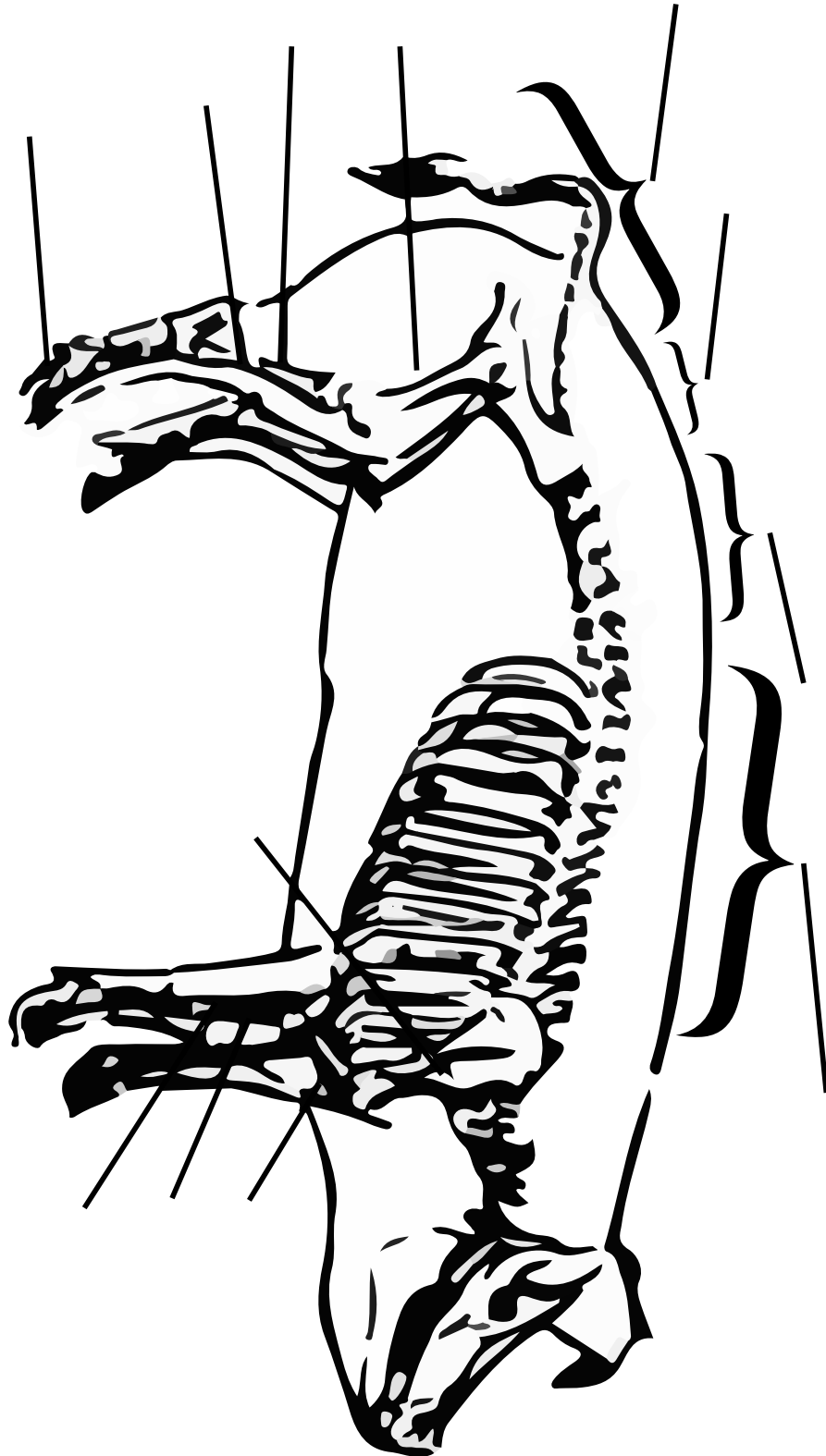
SKILLATHON



ACTIVITY

SENIOR

Skeletal Anatomy



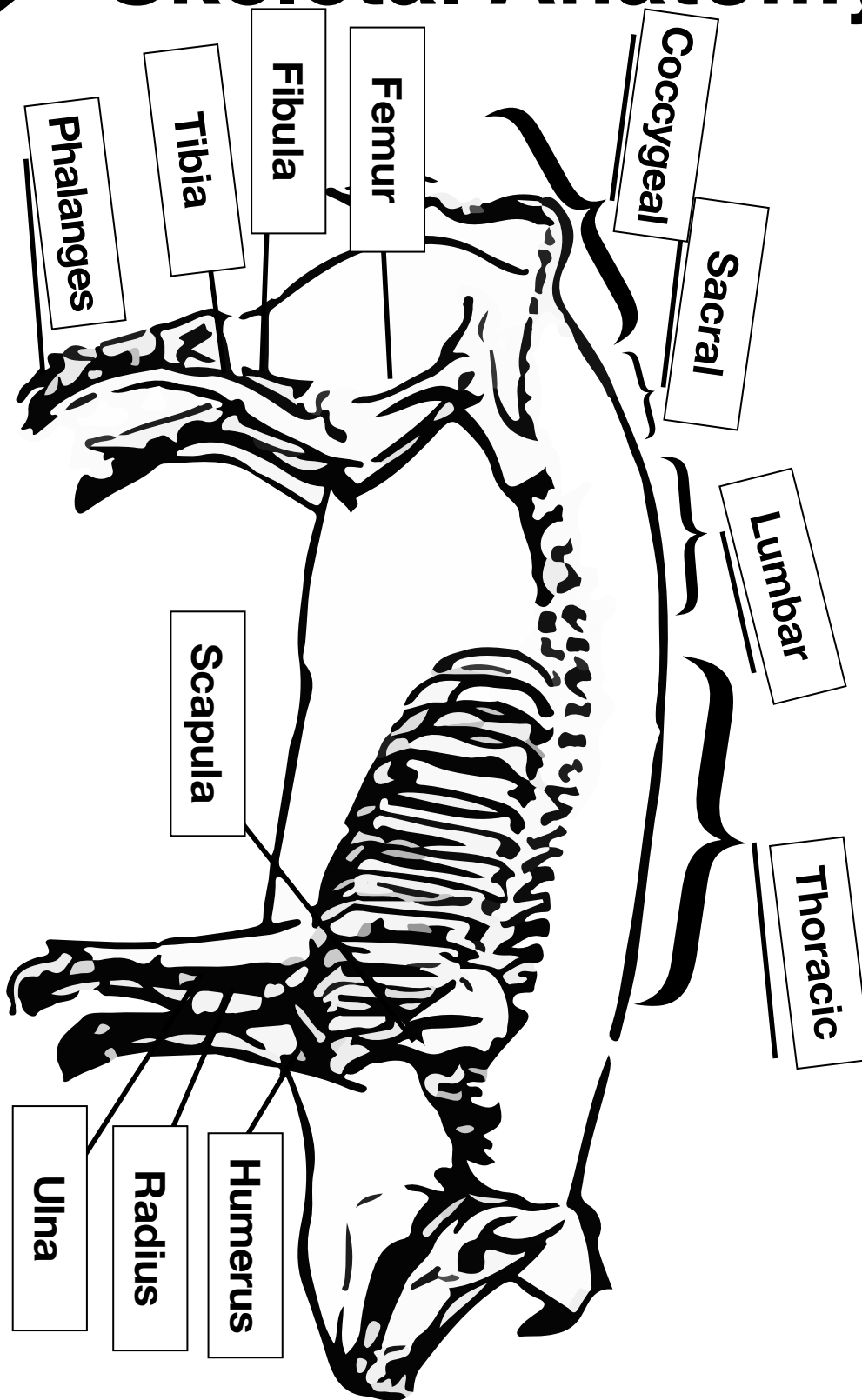
SKILLATHON



KEY

SENIOR

Skeletal Anatomy



INSTRUCTIONS

SKILLATHON



SENIOR Skeletal Anatomy

Skeletal Anatomy Instructions:

Ask each participant to place the correct label with the corresponding skeletal part.

Scoring: There are 12 labels and each correctly matched label with its corresponding skeletal part is worth 2 points, for a total of 24 points. Every participant will receive 1 free point, making this station a grand total of 25 points.

****The station total is 25 points.**

*Thank you very much for volunteering to help with the skillathon. Please remember to complete the skillathon facilitator information sheet and leave it on your stations table at the end of the competition. **Thank You!***



SKILLATHON



STATION # _____

SENIOR

Skeletal

Anatomy

